



“WHAT GETS MEASURED GETS DONE” MENSTRUAL HYGIENE MANAGEMENT

Direct and indirect MHM Indicators within the Sustainable Development Goals (SDGs)
WASH in Schools (WinS) Monitoring Framework



// Schools provide the ideal environment to reach all girls and boys and address taboos and misconceptions about menstruation in a culturally sensitive manner.

// Ministries of Education have the power and the responsibility to transform schools into places with MHM-friendly sanitation facilities and easy access to information about menarche and menstruation.

EMERGING JMP SERVICE LADDERS FOR MONITORING WASH IN SCHOOLS IN THE SDGs (WHO & UNICEF, 2016)

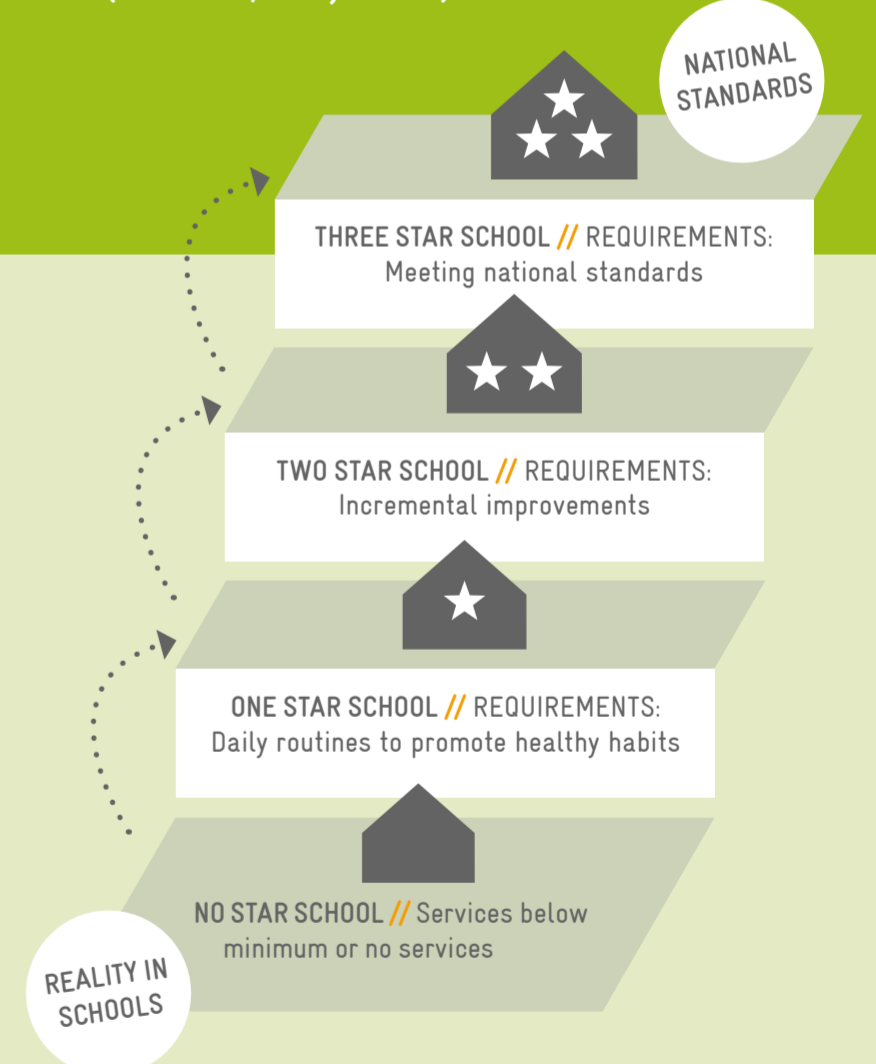
DRINKING WATER	SANITATION	HYGIENE
ADVANCED SERVICE Additional criteria may include quality, quantity, continuity, and accessibility to all users (to be defined at national level)	ADVANCED SERVICE Additional criteria may include student per toilet ratios, menstrual hygiene facilities, cleanliness, accessibility to all users, and excreta management systems (to be defined at national level)	ADVANCED SERVICE Additional criteria may include hygiene education, group handwashing, menstrual hygiene materials, and accessibility to all users (to be defined at national level)
BASIC SERVICE Drinking water from an improved source and water is available at the school at the time of the survey	BASIC SERVICE Improved sanitation facilities at the school that are single-sex and usable (accessible, functional and private) at the time of the survey	BASIC SERVICE Handwashing facilities with water and soap available at the school at the time of the survey
LIMITED SERVICE Drinking water from an improved source but water is unavailable at the school at the time of the survey	LIMITED SERVICE Improved sanitation facilities at the school that are either not single-sex or not usable at the time of the survey	LIMITED SERVICE Handwashing facilities with water but no soap available at the school at the time of the survey
NO SERVICE Drinking water from an unimproved source or no water source at the school	NO SERVICE Unimproved sanitation facilities or no sanitation facilities at the school	NO SERVICE No handwashing facilities available or no water available at the school

- ADVANCED SERVICE**
- > Access to information
 - > Cleanliness of toilets
 - > Water & soap in cubicles
 - > Covered bins
 - > Disposal mechanisms
 - > Functional lighting
 - > Emergency MHM material

- BASIC SERVICE**
- > Sanitation facilities
 - > Gender-segregated
 - > Usable:
 - Accessible
 - Functional
 - Private
 - > Handwashing facilities with water & soap



THREE STAR APPROACH FOR WinS PROGRAMME MANAGEMENT // A RECOGNITION OR INCENTIVE BASED MONITORING SYSTEM (UNICEF/GIZ, 2013)



PROMISING EXAMPLES are the national WinS programmes in India and the Philippines, where more than half of schools nationwide participated in voluntary monitoring and benchmarking.



TARGET 4.a: Build and upgrade education facilities that are child, disability and gender sensitive and provide safe, non violent, inclusive and effective learning environments for all.
INDICATOR 4.a.1: Proportion of schools with access to: (f) single-sex basic sanitation facilities; and (g) basic handwashing facilities (as per the WASH indicator definitions)



TARGET 6.2: By 2030, achieve access adequate and equitable sanitation and hygiene for all and end open defecation, paying special attention to the needs of women and girls and those in vulnerable situations.
INDICATORS: See 4.a.1 for WASH in schools indicators

