

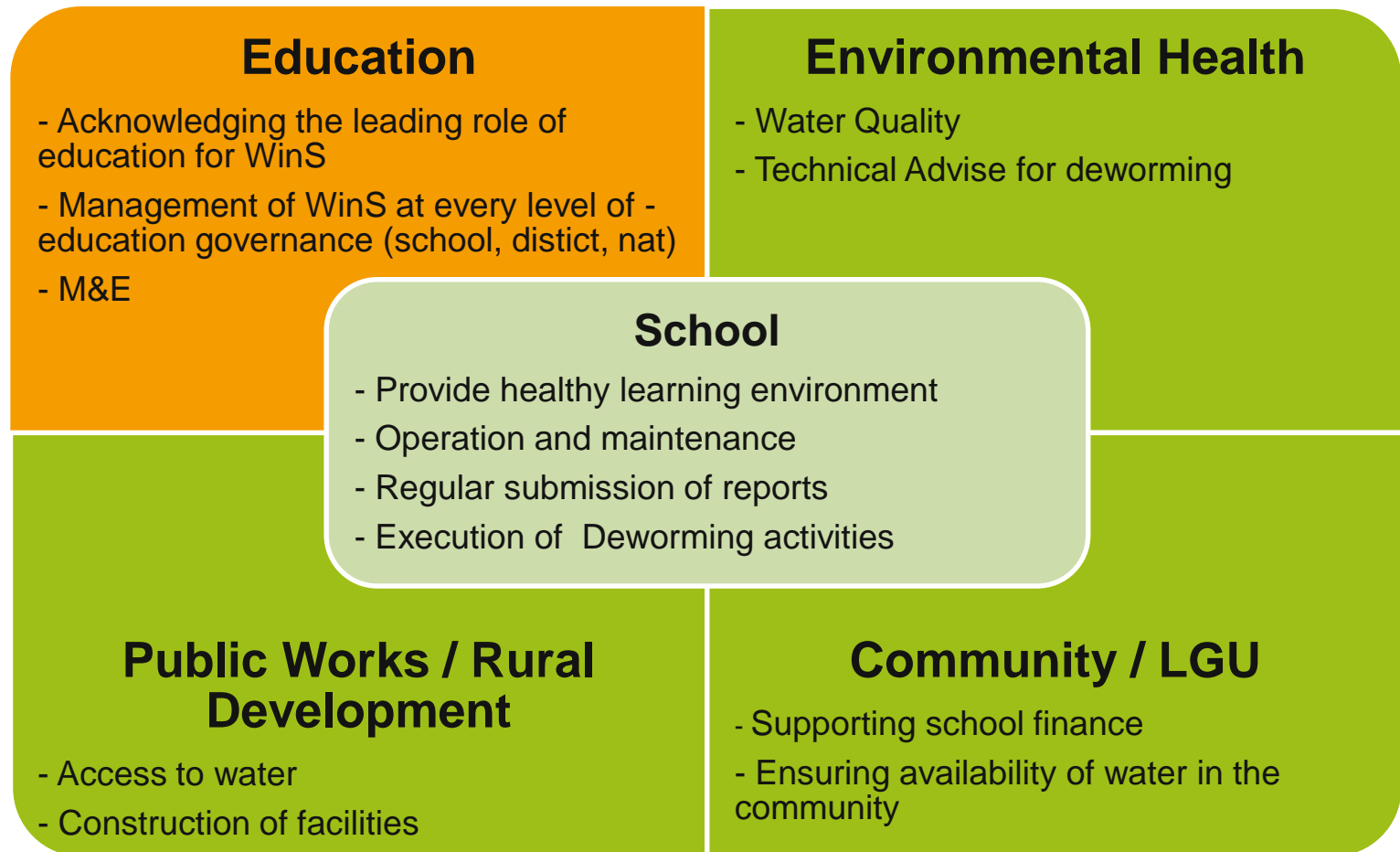


SDG INDICATORS

3-Star Approach Monitoring: Example DepEd ARMM, Philippines

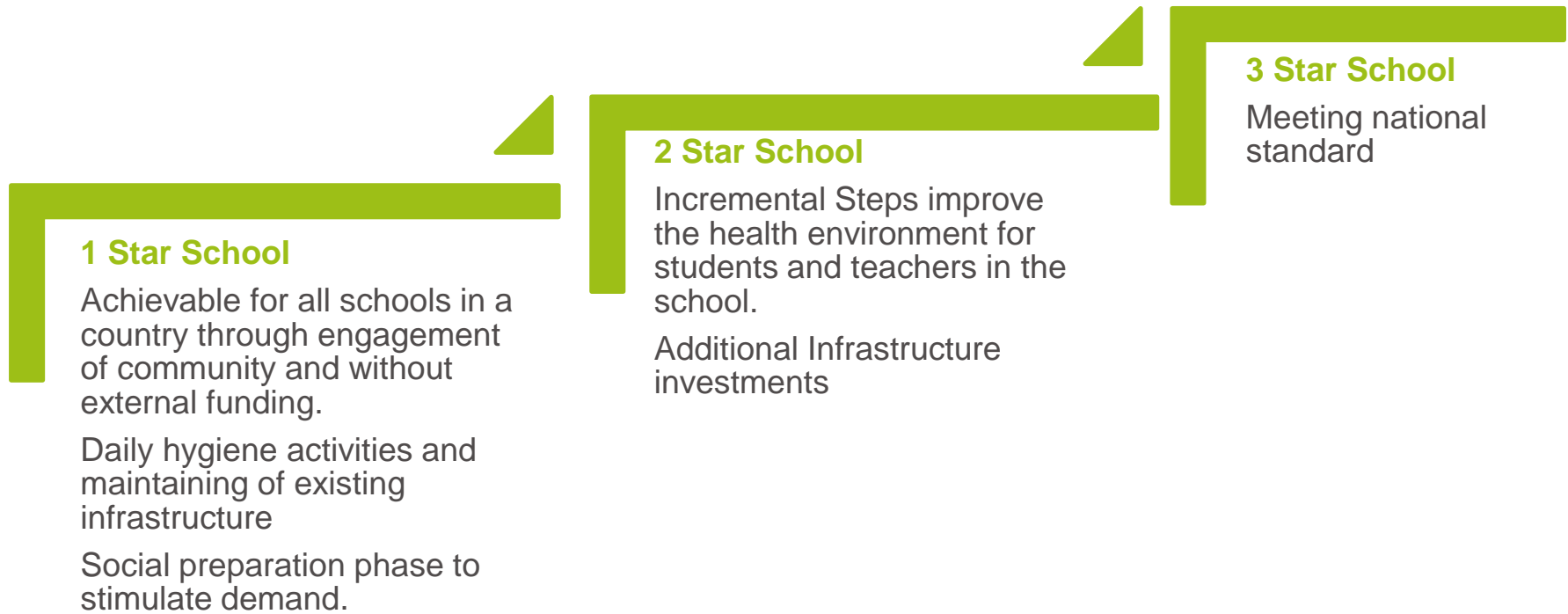


Inter-Sectoral Nature of WinS: Education sector taking the lead



3- Star Approach for WASH in Schools

Step-by-Step Improvement to reach National Standard



WinS M&E Accreditation Checklist for DepEd ARMM

	1-Star
Water	<ul style="list-style-type: none">• If potable water is not available in school children bring their own drinking water
Sani-tation	<ul style="list-style-type: none">• School has at least one functional toilet• Toilets have trash bin with cover• Maximum pupil to water outlet ratio is 20:1
Hygiene	<ul style="list-style-type: none">• School has functional group washing facility• Children in all classes participate in daily group handwashing activities with soap• Children in all classes participate in daily group tooth brushing activities• Daily cleaning of washing & toilet facilities• School offered deworming activities

WinS M&E Accreditation Checklist for DepEd ARMM

	1-Star	2-Star
Water	<ul style="list-style-type: none"> • If potable water is not available in school children bring their own drinking water 	<ul style="list-style-type: none"> • Water is available
Sani-tation	<ul style="list-style-type: none"> • School has at least one functional toilet • Toilets have trash bin with cover • Maximum pupil to water outlet ratio is 20:1 	<ul style="list-style-type: none"> • School has more than one functional toilet • School has at least one functional toilet dedicated for female pupils
Hygiene	<ul style="list-style-type: none"> • School has functional group washing facility • Children in all classes participate in daily group handwashing activities with soap • Children in all classes participate in daily group tooth brushing activities • Daily cleaning of washing & toilet facilities • School offered deworming activities 	<ul style="list-style-type: none"> • School has sanitary pads • School has activities to advocate hygiene practices

WinS M&E Accreditation Checklist for DepEd ARMM

	1-Star	2-Star	3-Star
Water	<ul style="list-style-type: none"> • If potable water is not available in school children bring their own drinking water 	<ul style="list-style-type: none"> • Water is available 	<ul style="list-style-type: none"> • Potable water is available
Sani-tation	<ul style="list-style-type: none"> • School has at least one functional toilet • Toilets have trash bin with cover • Maximum pupil to water outlet ratio is 20:1 	<ul style="list-style-type: none"> • School has more than one functional toilet • School has at least one functional toilet dedicated for female pupils 	<ul style="list-style-type: none"> • Maximum ratio Pupil to toilet is 50:1 • School has toilet for people with disability
Hygiene	<ul style="list-style-type: none"> • School has functional group washing facility • Children in all classes participate in daily group handwashing activities with soap • Children in all classes participate in daily group tooth brushing activities • Daily cleaning of washing & toilet facilities • School offered deworming activities 	<ul style="list-style-type: none"> • School has sanitary pads • School has activities to advocate hygiene practices 	

DEPARTMENT OF EDUCATION
AUTONOMOUS REGION OF MUSLIM MINDANAO
WASH IN SCHOOLS MONITORING FORM

Instruction: Fill-up the spaces provided correctly and completely. This form shall be accomplished by the School Head or any authorized representative from the school.

A. SCHOOL PROFILE

Name of School _____ School ID: _____
 Division: _____ District: _____
 Name of School Head: _____ Contact No.: _____
 Number of Pupils: _____ Male _____ Female School Year: _____

Does the school have a transparency board?

Yes No

B. WATER ACCESS

2. Is water available in the school premises at time of assessment?

Yes No

3. What water source/s are available in school? Check multiple boxes if more than 1 source

<input type="checkbox"/>	Piped-water from Water District	<input type="checkbox"/>	Open well
<input type="checkbox"/>	Hand pump well/dugwell	<input type="checkbox"/>	Water Tanker /Bottled Water
<input type="checkbox"/>	Rain collector	<input type="checkbox"/>	Surface water (river, lake)

4. Is the water in the school potable?

Yes No

5. If the water is not potable, do children bring their own drinking water

Yes No

C. SANITATION

6. Total Toilets bowls for Pupils that are Functional, Clean and Secured

**Refers to toilets that can be flushed, not smelly, and can be locked from the inside*

Male Toilets	Female Toilets	Shared (Male and Female)

7. Is there a trash bin with cover in the toilets?

Yes No

8. Is there a toilet for people with disabilities?

Yes No

9. Is there a functional group washing facility in the school?

**Water should be able to flow smoothly to the water outlets of the facility*

Yes No

10. Total water outlets for all group/non-group washing facilities in the school _____

**Water outlets can be any opening that provides water for washing (group facilities or individual faucets).*

DepEd ARMM WinS Monitoring Tool

D. HYGIENE

11. Do children in all classes participate in daily group handwashing activities with soap?

All classes Some None

12. Do children in all classes participate in daily group tooth brushing activities?

All Some None

13. Did the school conduct deworming activities during the last six months?

Yes No

14. Total number of pupils dewormed in the last six months _____

15. Are there sanitary pads available in the school?

Yes No

16. Does the school have activities to advocate hygiene practices?

Yes No

Name: _____ Signature: _____
 Designation: _____ Date: _____

Survey results are submitted via a simple mobile application (Open Data Kit)

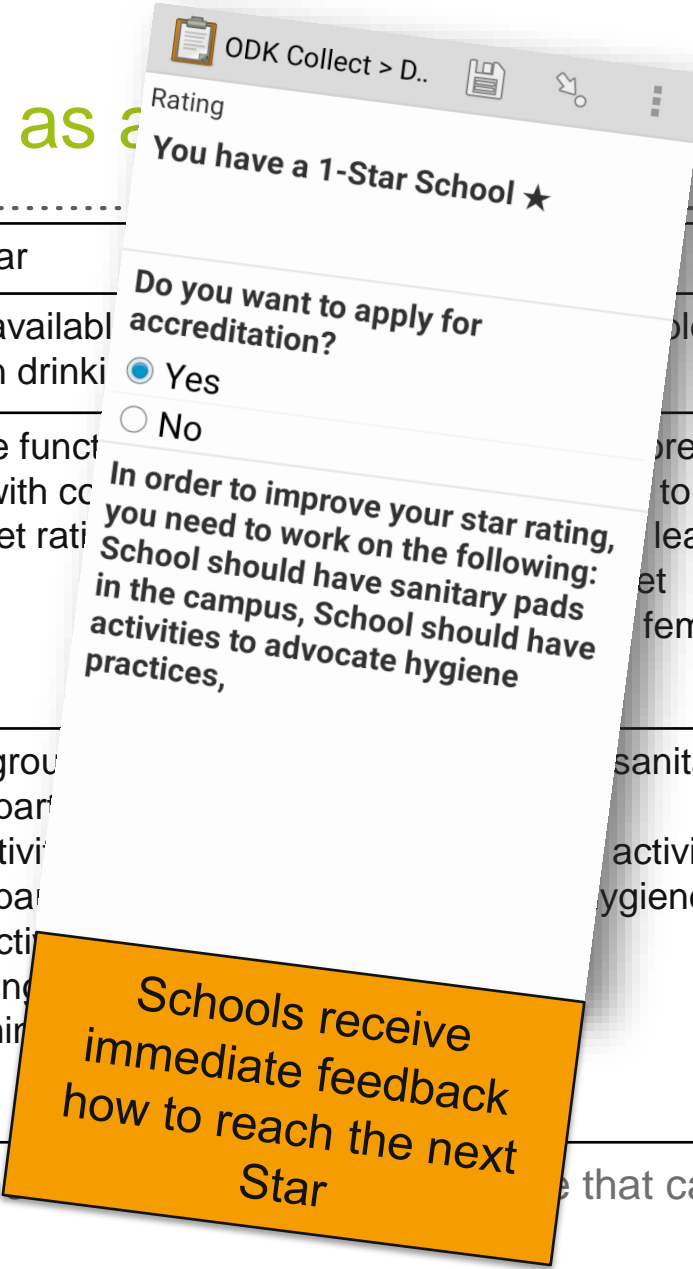
Three Stars as a Feedback Mechanism

	1-Star	2-Star	3-Star
Water	<ul style="list-style-type: none"> ✓ If potable water is not available in school children bring their own drinking water 	<ul style="list-style-type: none"> ✓ Water is available 	<ul style="list-style-type: none"> ✗ Potable water is available
Sani tation	<ul style="list-style-type: none"> ✓ School has at least one functional toilet ✓ Toilets have trash bin with cover ✓ Max pupil to water outlet ratio is 20:1 	<ul style="list-style-type: none"> ✓ School has more than one functional toilet ✓ School has at least one functional toilet dedicated for female pupils 	<ul style="list-style-type: none"> ✗ Maximum ratio Pupil to toilet is 50:1 ✗ School has toilet for people with disability
Hygiene	<ul style="list-style-type: none"> ✓ School has functional group washing facility ✓ Children in all classes participate in daily group handwashing activities with soap ✓ Children in all classes participate in daily group tooth brushing activities ✓ Daily cleaning of washing & toilet facilities ✓ School offered deworming activities 	<ul style="list-style-type: none"> ✗ School has sanitary pads ✗ School has activities to advocate hygiene practices 	

- Provides supervisors with framework on technical assistance that can be given to schools

Three Stars as a Mechanism

	1-Star	3-Star
Water	<ul style="list-style-type: none"> ✓ If potable water is not available children bring their own drinking water 	<ul style="list-style-type: none"> ✗ Potable water is available
Sanitation	<ul style="list-style-type: none"> ✓ School has at least one functional toilet ✓ Toilets have trash bin with cover ✓ Max pupil to water outlet ratio 	<ul style="list-style-type: none"> ✗ Maximum ratio Pupil to toilet is 50:1 ✗ School has toilet for people with disability
Hygiene	<ul style="list-style-type: none"> ✓ School has functional group handwashing facilities ✓ Children in all classes participate in group handwashing activities ✓ Children in all classes participate in group tooth brushing activities ✓ Daily cleaning of washing facilities ✓ School offered deworming 	<ul style="list-style-type: none"> ✗ Sanitary activities to hygiene



Schools receive immediate feedback how to reach the next Star

- Provides supervisors with framework that can be given to schools

Current Efforts at National Level

- MoE has released WinS guidelines
- National TWG defining 3-Star Indicators
- Set direction and priorities towards national standards
- Establishment of a merit system to motivate school communities
- Establishment of a feedback loop to all levels within the education sector
- Integration of few selected (max 5) indicators into national EMIS



Advantages & Limitations of DepEd ARMM WinS M&E System

Advantages

- Can be understood by non-technical people
- Principal/Community assess and experience WinS Situation in School
- Can be gathered for all schools on a yearly basis
- Direct Feedback Mechanism
- Tool for technical assistance from subnational level
- Motivates schools to adopt a step-wise approach to meet national standards

Limitations

- Reduced Dataset
- Other sector partners are needed to monitor specific indicators that are technical in nature (e.g. water quality)

Enabling Factors for Implementing a National WinS M&E Systems

System Thinking: Build on existing M&E systems (EMIS) in the education sector to collect data from all schools

Simple: Indicators, which school community can measure, understand and influence. Simplicity is the key to make WinS monitoring on scale happen

Scalable: Can be deployed on a national scale for all schools

Sustainable: Incorporate feedback loops for schools in M&E tools to support improvement

Thank You!



Contact:

Dr. Bella Monse
Principal Advisor GIZ Fit for
School ARMM

Contact M&E:

Abram Abanil
Regional Monitoring and
Evaluation Coordinator