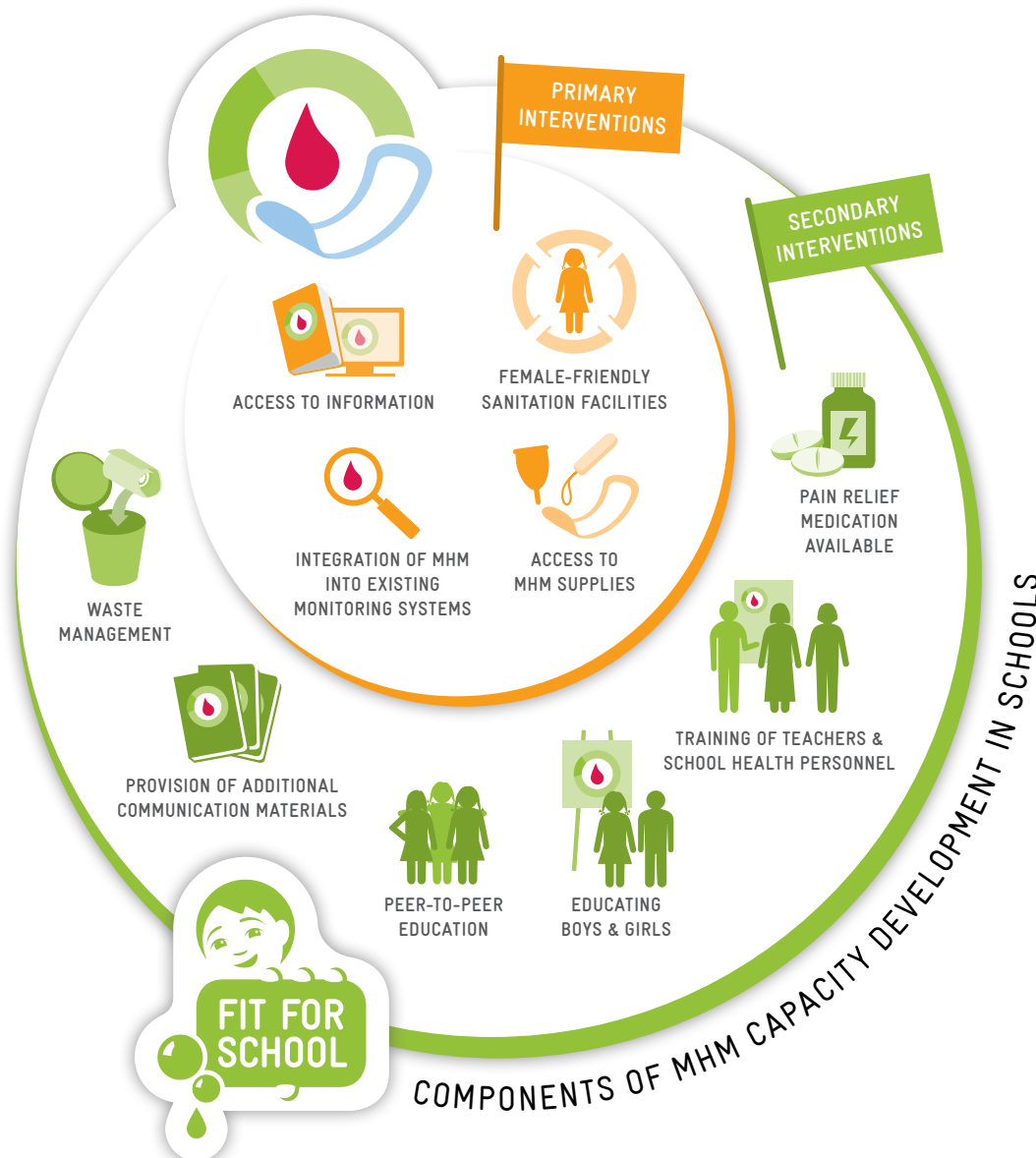


FIT FOR SCHOOL // CONCEPT: MENSTRUAL HYGIENE MANAGEMENT



The Regional Fit for School Programme in cooperation with the Sector Programme "Sustainable Sanitation" has developed a MHM in Schools concept, which is modular, culturally adaptable and consists of a primary and secondary intervention package.

PRIMARY INTERVENTIONS	SECONDARY INTERVENTIONS
Access to information // e.g. booklet, video, app	Pain relief medication available in schools
Female-friendly sanitation facilities // gender-segregated, functional lighting, lockable from the inside, handwashing facilities with water & soap, cleaned daily, covered bins and methods of disposal available	Capacity building for teachers and school health personnel
Access to MHM supplies // e.g. emergency supply of sanitary pads, reusable pads	Identification of a focal teacher for MHM
Integration of MHM into existing monitoring systems of the education sector (e.g. EMIS)	Getting male students and teachers involved
	Peer-to-peer education // e.g. school clubs, girls clubs
	Additional information, education and communication materials
	Waste management





“WHAT GETS MEASURED GETS DONE” MENSTRUAL HYGIENE MANAGEMENT

Direct and indirect MHM Indicators within the Sustainable Development Goals (SDGs) WASH in Schools Monitoring Framework to be measured in each school using the EMIS – Education Management Information System



WHO-UNICEF JOINT MONITORING PROGRAMME SERVICE LADDERS FOR MONITORING WASH IN SCHOOLS IN THE SDGs

DRINKING WATER	SANITATION	HYGIENE
ADVANCED SERVICE (to be defined at national level)	ADVANCED SERVICE (to be defined at national level)	ADVANCED SERVICE (to be defined at national level)
BASIC SERVICE Drinking water from an improved source and water is available at the school at the time of the survey	BASIC SERVICE Improved sanitation facilities at the school that are single-sex and usable (accessible, functional and private) at the time of the survey	BASIC SERVICE Handwashing facilities with water and soap available at the school at the time of the survey
LIMITED SERVICE	LIMITED SERVICE	LIMITED SERVICE
NO SERVICE	NO SERVICE	NO SERVICE

- ADVANCED SERVICE**
- > Access to information
 - > Cleanliness of toilets
 - > Water & soap in cubicles
 - > Covered bins
 - > Disposal mechanisms
 - > Functional lighting
 - > Emergency MHM material



TARGET 4.a: Build and upgrade education facilities that are child, disability and gender sensitive and provide safe, non violent, inclusive and effective learning environments for all.
INDICATOR 4.a.1: Proportion of schools with access to: (f) single-sex basic sanitation facilities; and (g) basic handwashing facilities (as per the WASH indicator definitions)



TARGET 6.2: By 2030, achieve access adequate and equitable sanitation and hygiene for all and end open defecation, paying special attention to the needs of women and girls and those in vulnerable situations.
INDICATORS: See 4.a.1 for WASH in schools indicators

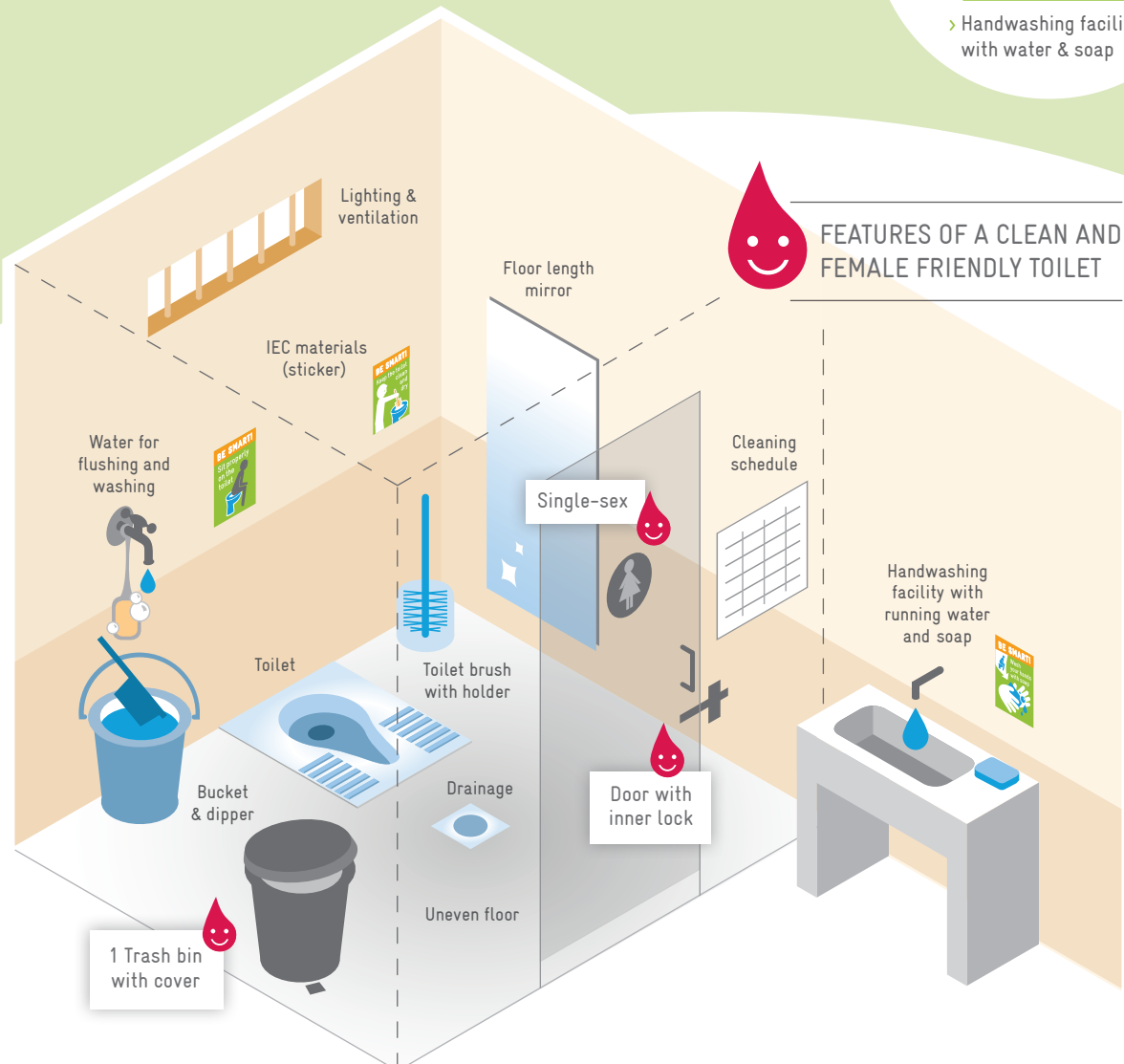
BASIC SERVICE

- > Sanitation facilities Gender-segregated Usable:

SDG 4

- Accessible
- Functional
- Private

- > Handwashing facilities with water & soap



FEATURES OF A CLEAN AND FEMALE FRIENDLY TOILET